

ENERGY AND WATER USAGE

Every apartment in Germany has connections for electricity and water. Some also have a connection for gas. It is best to have your landlord show you the connections when you first move into your new apartment. Ask questions if something doesn't seem clear to you.



ELECTRICITY USAGE

The use of electricity in a household is measured with an electricity meter. Examples of things that need a lot of electricity are electric kettles and water heaters for hot water in the kitchen or bath.

REGISTERING FOR ELECTRICITY

- When moving into the apartment: read the number shown on the meter and write it down.
- The local power company's electricity is available to you automatically.
- The power company will estimate how much electricity you will probably use (in kilowatt hours (kWh)). They will tell you how much you have to pay each month.
- The payment is taken directly from your bank account each month.
- Electricity is not included in the overall rent.
- Keep an eye on how much electricity you use.
- The meter is read once a year and the future monthly payments are adjusted. If more electricity has been used than previously estimated, then you have to pay back the difference. The amount you will pay in the future each month will be increased. If less has been used, you will get money back, and your future monthly rate will be lower.



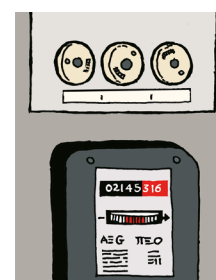
Electricity provider contact info

ELECTRICAL BOX

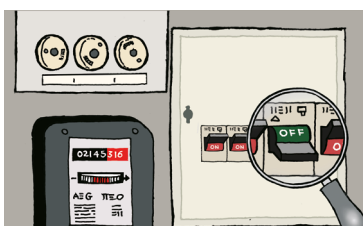


IMPORTANT TO KNOW

In emergencies and when work is being done on an electrical supply line (for example, changing a light bulb), the electricity must be turned off. This is done by switching off the correct fuse in the fuse box.

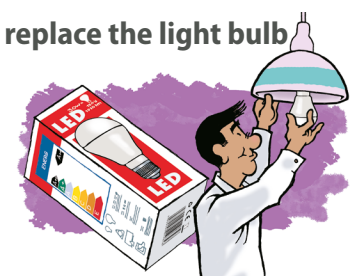


1 turn off the electricity



There is normally at least one switch for every room to turn off the electricity in the switch box. Each switch should have a label.

2 replace the light bulb



→ TIPS FOR REDUCING ELECTRICITY USAGE:

- LED lamps use much less electricity than normal older light bulbs.
- Turn TVs, computers, and other electric devices completely off. Don't use stand-by, otherwise the devices continue to use electricity.
- You can save electricity when cooking by using pot lids. Put the heat on a low level and the lid will keep the temperature in the pot high. This also works for cooking on a gas stove.



GAS USAGE

Examples of things that use gas are gas stoves and water heaters for hot water and/or for heating. The amount of gas a renter uses is measured with a gas meter.

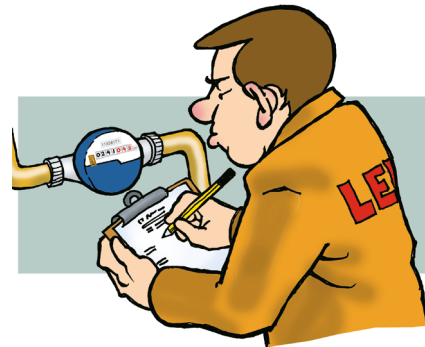
REGISTERING FOR GAS

- When moving into the apartment: read the number shown on the meter and write it down.
- Decide on a gas supplier.
- Registering with that gas supplier is done either online or in writing, using a form.
- The gas supplier then estimates how much gas you will probably use (in kilowatt hours (kWh)). They will tell you how much you have to pay each month.
- The payment is taken directly from your bank account each month.
- Gas is not included in the overall rent.
- You should keep an eye on how much gas you use, so that the costs don't increase unnecessarily.
- The gas meter is read once a year and the future monthly payments are adjusted. If more electricity has been used than previously estimated, then you have to pay back the difference. The amount you will pay in the future each month will be increased. If less has been used, you will get money back, and your future monthly rate will be lower.

Gas provider contact info

WATER CONSUMPTION

- Water consumption is read once a year for the whole building and the costs are then divided among the renters. Renters who use more water pay more.
- Some apartments have their own individual water meters, so that it is known exactly how much that household used.
- The amount on the meter is recorded when moving in.



→ TIPS FOR REDUCING WATER CONSUMPTION:

- You can cut costs the most by using less warm water. Wash your dishes in the sink with hot water. Dishwashers don't use much water when the water-saver cycle is used.
- Taking a shower uses less water than taking a bath in the tub.
- Average dirty laundry can be washed in the washing machine without the pre-wash cycle.



EBZ
Akademie



Die Wohnungswirtschaft
Deutschland

GdW